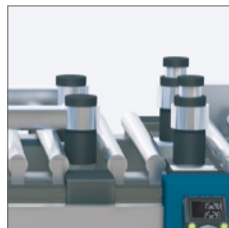
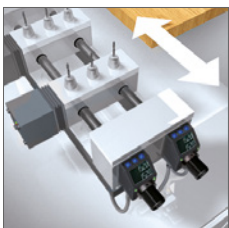
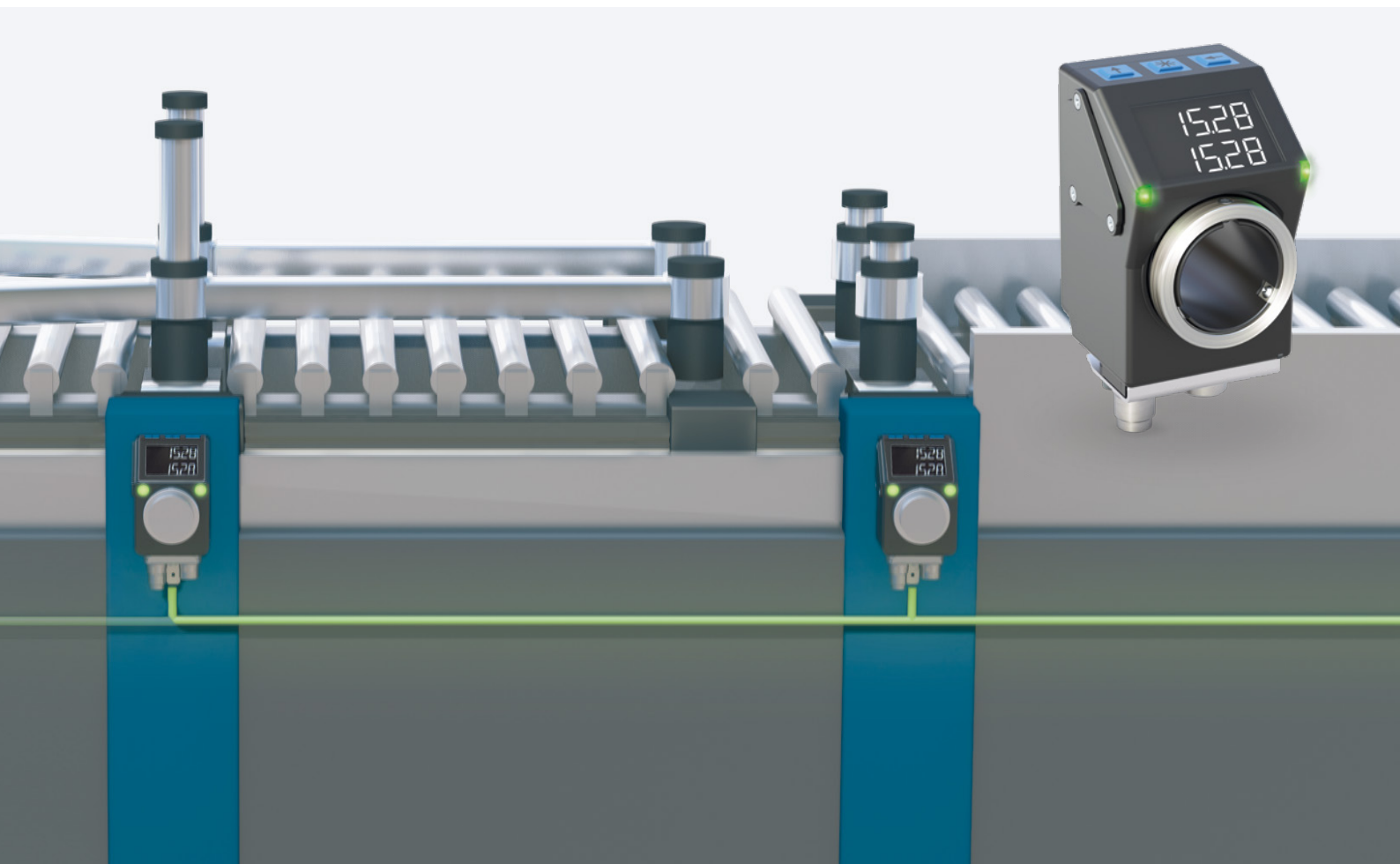




## POSITIONING SYSTEMS

## MONITORED SIZE CHANGEOVER



Simple  
Unambiguous  
Process reliability  
Efficient

## SIZE CHANGEOVER WITH NEW CONCEPT

Machine settings that do not require frequent adjustment are normally made with the aid of mechanical-digital position indicators. However, the tooling times with this solution are the longest, as each position must be manually adjusted and checked.

### Manual Size Changeover

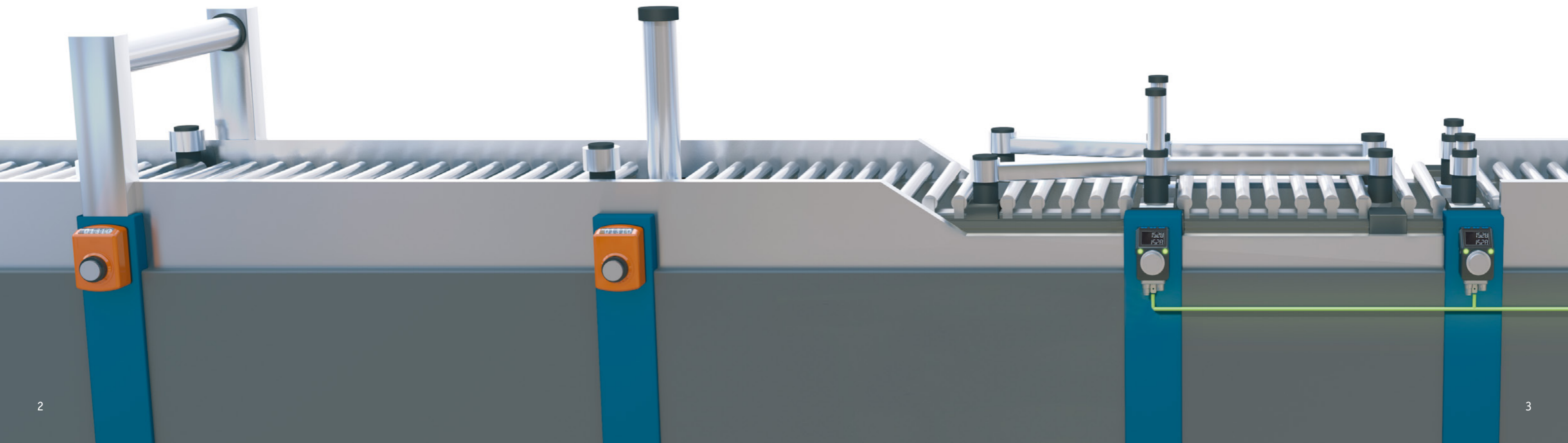
Manual size changeover with mechanical position indicators require inspection of each individual adjustment point and comparison with a recipe list.



In contrast, when using bus-integrated electronic position indicators, the machine control signals the target value to each adjustment position via field bus. Manual adjustment by the machine operator is therefore fast and intuitive and all positions are centrally monitored. Manual comparison with a recipe list is not necessary.

### Monitored Size Changeover

The target position is displayed as a target value at every adjustment point and a red/green status LED signals whether the setting there requires adjustment. If adjustment is correct, all LEDs light up in green.



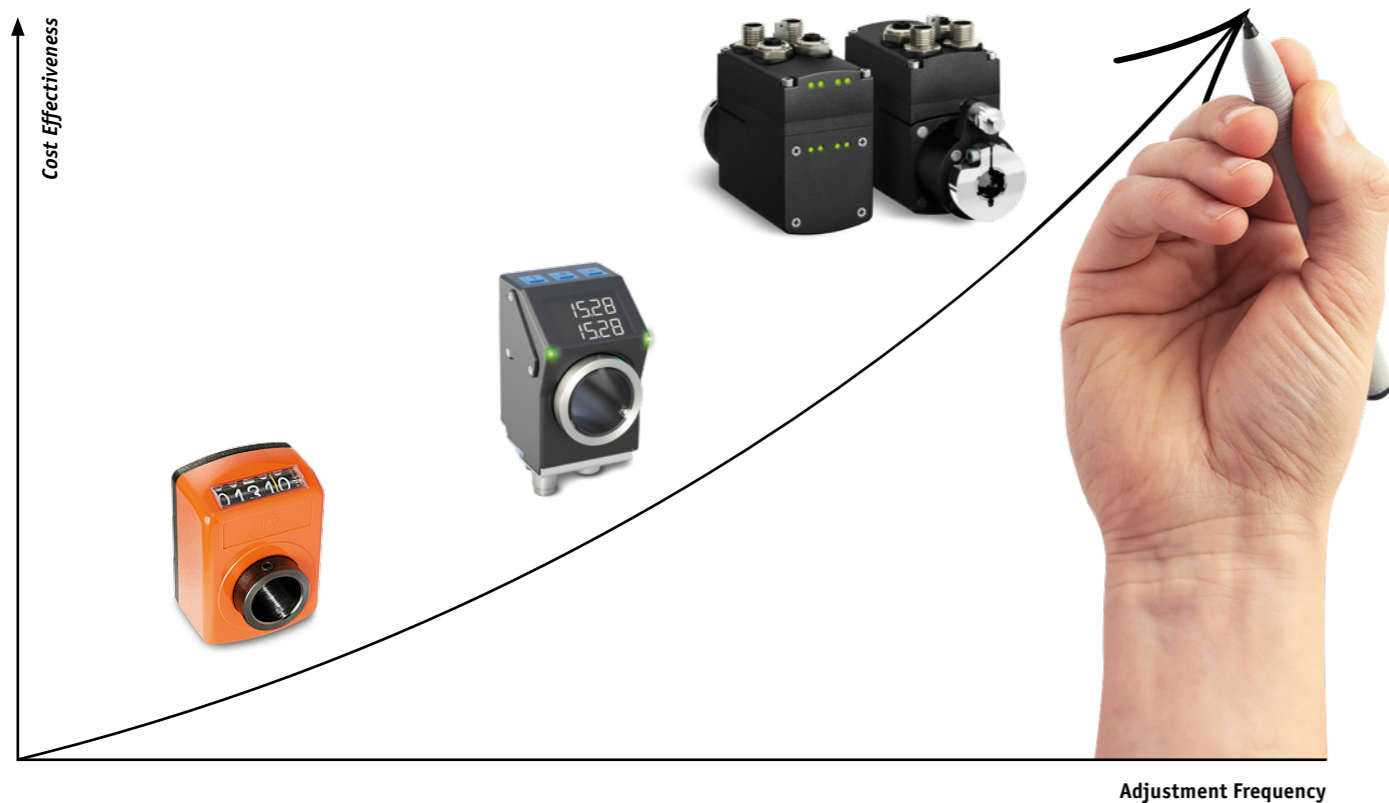


Adjustment required

Target Position reached

### Higher machine efficiency due to shorter downtimes

For even shorter tooling times or for spindle adjustment at inaccessible locations – automated format changes with SIKO DriveLine. Field bus compact positioning drives for process-optimized, exact and fully-automatic positioning. Profit from our end-to-end assembly compatible range of solutions for modular upgrading of your machine.



### SLIDE ADJUSTMENT

#### Advantages

- Direct linear position detection
- Robust sensors due to magnetic scanning
- Resolution up to 0.01 mm
- Absolute measuring technology with internal backup



### SPINDLE ADJUSTMENT

#### Advantages

- Fainless steel hollow shaft up to 25.4 mm
- Resolution up to 0.5°
- Mounting compatible with mechanical position indicators DA04 / DA09S



### FORMAT PART CHANGES

#### Advantages

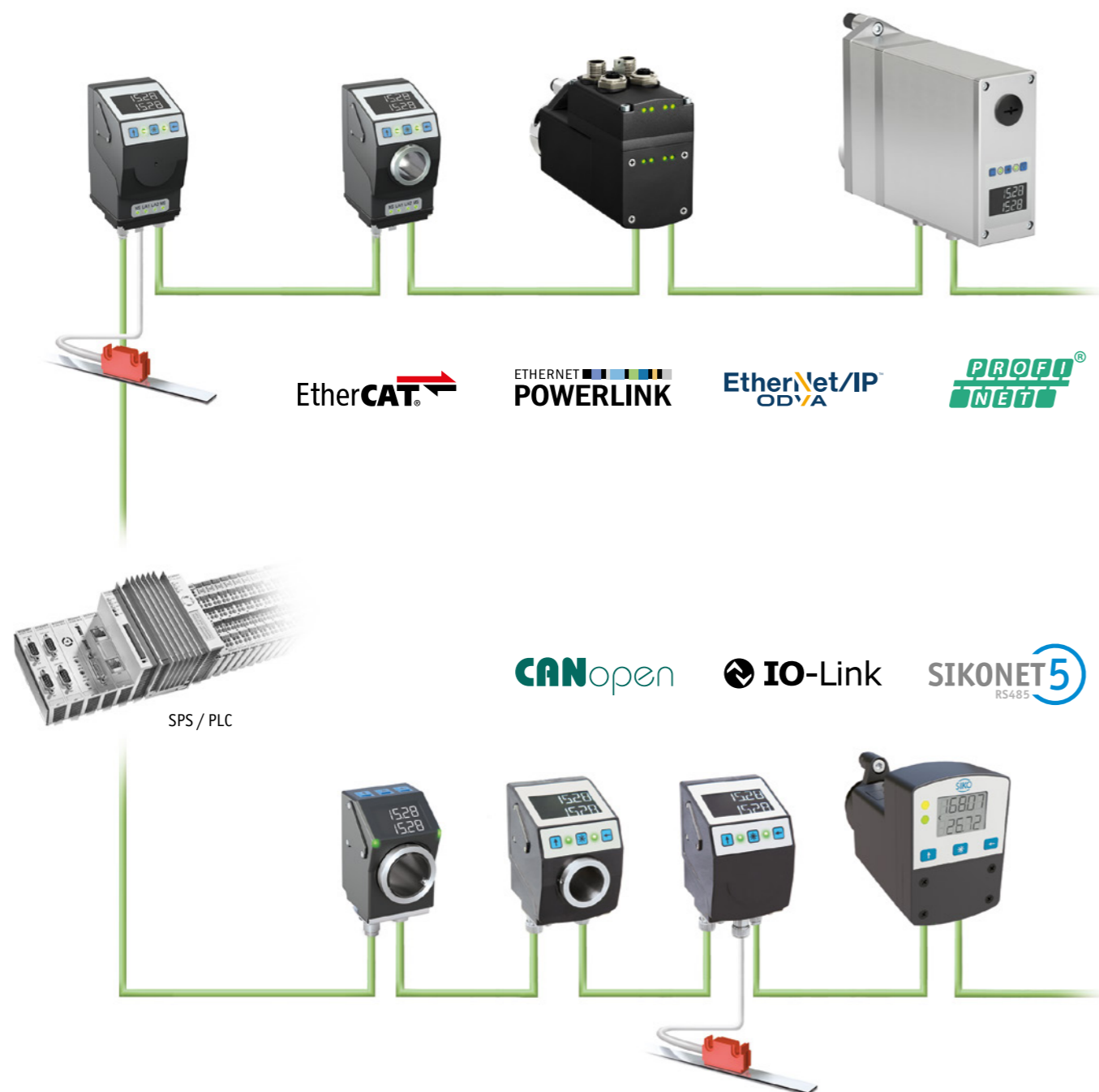
- Display for paper-free format part or tool changes
- Large operating button for acknowledgement



# INTELLIGENT NETWORKING

## FLEXIBLE USE

Whether Profinet, Ethernet/IP or EtherCAT – with a smart interface solution you can connect our bus-capable position indicators and positioning drives simply and cost-effectively to up to 16 fieldbus or Industrial Ethernet Networks.



# CONTROL SYSTEM

## Profile IPS1010

A complete system from a single source!  
With the SIKO Controller IPS1010 we offer you a stand-alone control system for bus-capable SIKO position indicators and positioning drives. The intuitive user interface makes operation child's play!



## Advantages

- Pre-programmed controller with HMI
- Plug & Play format changeover
- Monitored and automatic spindle adjustment
- Easy to integrate, no programming skills required

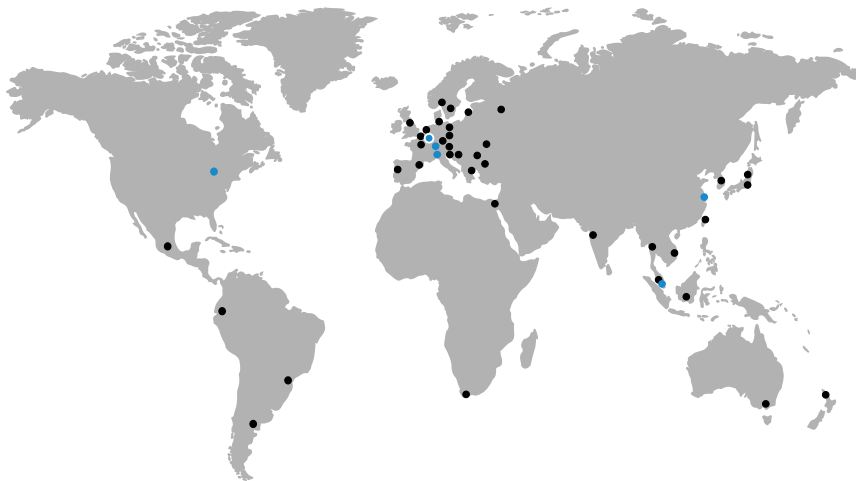
**We are available for you.**

**Regardless of whether it is locally ...**

Are you looking for a representative in your area? Our website will help you. At [www.siko-global.com](http://www.siko-global.com) you can find current contact details of a German SIKO representation in your area via your zip code. Or give us a call, we will be happy to provide you with the appropriate contact details.

**... or internationally.**

SIKO is represented worldwide by subsidiaries and commercial agencies. You can find a SIKO partner in your area at [www.siko-global.com](http://www.siko-global.com).



**SIKO Global**



**SIKO GmbH**

**SIKO GmbH**

Weiherrmattenweg 2  
79256 Buchenbach



**SIKO Products Inc.**



**SIKO Italia S.r.l.**

Am Krozinger Weg 2  
79189 Bad Krozingen



**SIKO MagLine AG**



**SIKO International Trading  
(Shanghai) Co., Ltd.**

+49 7661 394-0  
info@siko-global.com



**SIKO Products Asia Pte. Ltd.**

[www.siko-global.com](http://www.siko-global.com)

**Follow "SIKO-global" and stay up to date!**

